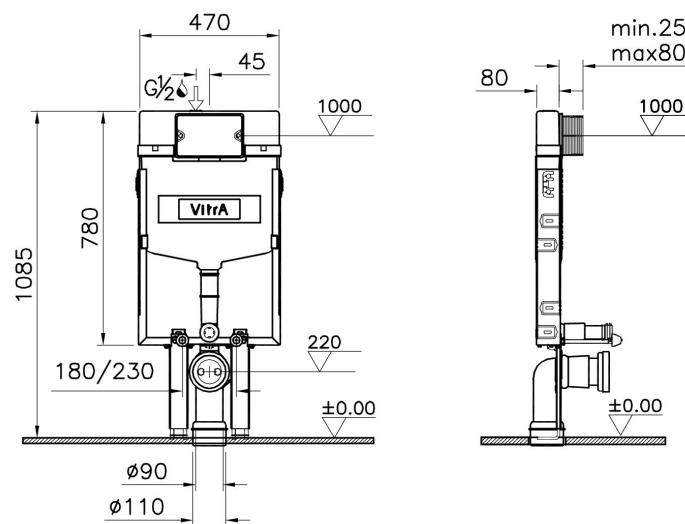


# VitrA

## Description

Standard installation set for wall-hung WC pans

Code	748-1850-01
Installation Type	Standard (Built-in wall/brick wall)
Working Pressure	0,5-10 Bar (Recommended 3-5 Bar)
WC Type	Wall Hung WC Pans
Control System	All Systems
Water Capacity	3-6 L(Adjustable)



VitrA retains the right to change details about the products and technical specifications without prior notice.